

Fujitsu recommends Windows 10 Pro.

Data Sheet

FUJITSU Tablet LIFEBOOK U729X

Multi-Mode Productivity

The FUJITSU Tablet LIFEBOOK U729X is an ultra-light, portable 2-in-1 with a day-long battery that supports multi-mode working style. The device can handle demanding design and illustration based applications with ease using latest Intel processors. It supports USB Type C, comes with the Windows 10 Pro operating system and offers industry-leading PalmSecure® authentication technology for your enterprise security needs.

Multi-mode usage functionality

Designed to take your productivity to the next level, whether you're outdoors or indoors

- 360° foldable 2 in 1 device with 4 functional working modes and an anti-glare display with 12.5" Full HD screen and new (optional) rear camera



Future-proof connectivity

Future-proof all your connectivity needs with one universal cable to rule them all

- Equipped with USB Type-C with power delivery functionality



Superior security

Protecting your enterprise data with industry-leading palm vein authentication technology

- Integrated PalmSecure® feature that provides an unmatched security for your enterprise data

Lightweight and robustness

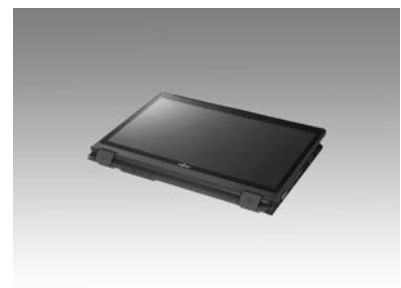
The robust lightweight device offers you the freedom you need as well as ultimate portability

- Weighing in at just 1.2 kg
- Durability is Military Standard MIL-STD-810G compliant

Long battery life

All-day battery life helps you tackle challenges with ease

- With up to 12.10 hours of battery backup and up to 80% charging in under 1 hour



Components

Base unit	LIFEBOOK U729X
Operating systems	
Operating system pre-installed	Windows 10 Pro. Fujitsu recommends Windows 10 Pro. Windows 10 Home
Operating system notes	Windows 10 Support: After the end of the product life FUJITSU will continue to test and support all upcoming Windows 10 releases for a period of maximum 5 years – depending on the available extension of hardware services through FUJITSU Warranty top ups. For details please see "FUJITSU Service Statement for Windows 10 Semi-Annual-Channel Support" at http://support.ts.fujitsu.com .
Processor	
	Intel® Core™ i7-8665U processor (4 Cores / 8 Threads, 1.9 GHz, up to 4.8 GHz)
	Intel® Core™ i5-8365U processor (4 Cores / 8 Threads, 1.6 GHz, up to 4.1 GHz)
	Intel® Core™ i5-8265U processor (4 Cores / 8 Threads, 1.6 GHz, up to 3.9 GHz) *
	Intel® Core™ i3-8145U processor (2 Cores / 4 Threads, 2.1 GHz, up to 3.9 GHz) *
	*Processor only for retail, SMB, education and government
Memory modules	
	4 GB (1 module(s) 4 GB) DDR4, 2,400 MT/s, SO DIMM
	8 GB (1 module(s) 8 GB) DDR4, 2,400 MT/s, SO DIMM
	16 GB (1 module(s) 16 GB) DDR4, 2,400 MT/s, SO DIMM
Hard disk drives (internal)	
	SSD SATA III, 1024 GB, SED
	SSD SATA III, 512 GB, SED
	SSD SATA III, 256 GB, SED
	SSD SATA III, 128 GB, SED
Hard disk notes	One Gigabyte equals one billion bytes, when referring to hard disk drive capacity. Accessible capacity may vary, also depending on used software. Up to 20 GB of HDD space is reserved for system recovery Internal storage interface: M.2 SATA
Interface add on cards/components (optional)	
3G/4G (optional)	LTE Sierra Wireless EM7455 (Cat. 6) (Downlink speed up to 300 Mbit/s, Uplink speed up to 50 Mbit/s)
WLAN (optional)	Intel® Dual Band Wireless-AC9560 11ac with integrated Bluetooth 5.0 Import and usage according to country-specific regulations.
Display	
	31.8 cm (12.5-inch),LED backlight,(HD),Anti-glare touchscreen,magnesium,1,366 x 768 pixel,1,000:1,220 cd/m ²
	31.8 cm (12.5-inch),LED backlight,(Full HD),Glare IPS touch display,magnesium,1,920 x 1,080 pixel,700:1,260 cd/m ²
	31.8 cm (12.5-inch),LED backlight,(Full HD),Anti-glare touchscreen,magnesium,1,920 x 1,080 pixel,700:1,260 cd/m ²
Multimedia	
Camera	Built-in webcam with Status LED, HD (1280 x 720) (1 megapixel); Out camera (on palm rest), 5 megapixel with autofocus
Microphone	dual digital array microphone

Base unit

Base unit	LIFEBOOK U729X
General system information	
Chipset	Integrated in CPU
Supported capacity RAM (min.)	8 GB

General system information

Supported capacity RAM (max.)	16 GB
Memory slots	1 LPDDR4 (2400 MHz)
LAN	Built-in 10/100/1,000 MBit/s Intel® I219V
LAN notes	Intel vPro capable
Integrated WLAN	Intel® Dual Band Wireless-AC9560 11ac with Bluetooth 5.0
BIOS version	UEFI Specification 2.5
BIOS features	InsydeH2O Bios
Audio type	On board
Audio codec	Realtek ALC255
Audio features	2x digital array microphones, 2x built-in speakers (stereo)
MIL-STD tested	Yes, selected MIL-STD-810G tests passed. MIL-STD-810G test results are not a guarantee of future performance under identified test conditions. Accidental damage is not covered under standard international limited warranty.

Display

Display	31.8 cm (12.5-inch), Anti-Glare or Glare options, 1,920 x 1,080 pixel
Display notes	Wide-view high-bright LED display (for enhanced outdoor viewing). With magnesium display lid. Integrated ambient light sensor for automatic backlight adjustment to the working environment.
Sensors	3-axis Accelerometer Gyroscope Ambient Light Sensor Magnetic Field Sensor Compass
Aspect ratio	16:9
Digitizer / Touch Technology	Wacom Digitizer for pen (AES) input plus capacitive 10 finger multi-touch screen
Ambient light sensor	Integrated
Ambient light sensor notes	While enabled, the ambient light sensor automatically adjusts the display backlight

Graphics

Base unit	LIFEBOOK U729X
TFT resolution (HDMI)	up to 1,920 x 1,200
TFT resolution (VGA)	up to 1,920 x 1,200
TFT resolution (DVI on Port Replicator)	up to 1,920 x 1,200
TFT resolution (DisplayPort on Port Replicator)	up to 2,560 x 1,600
Graphics brand name	Intel® UHD Graphics 620
Graphics features	3 Display Support (2 external, 1 internal) DirectX® 12 OpenGL® 4.4
Graphics notes	Shared memory depending on main memory size and operating system

Interfaces

DC-in	1
Audio: line-out / headphone	1 (combo port with Audio line-in)
Audio: line-in / microphone	1 (combo port with Audio line-out)
Internal microphones	2 (digital)
USB 3.1 Gen1 (USB 3.0) total	2x Type-A (1 with Anytime USB charge functionality) 1x Type-C (with Power Delivery functionality)
USB Type-C	1 USB 3.1 Gen2 (10 Gbps)
VGA	1
HDMI	1 v1.4
Ethernet (RJ-45)	1

Interfaces

Memory card slots	1 (SD up to 2GB, SDHC up to 32GB, SDXC up to 128GB) - SD/microSD card : 2GB - SDHC/microSDHC card : 32GB - SDXC card : 512GB - microSDXC card : 200GB (or 128GB) Speed Class: up to UHS-I
SmartCard slot	1 (optional)
SIM card slot	1 (Micro-SIM, only for models with integrated 4G/LTE)

Keyboard and pointing devices

Backlit isolation keyboard
 Number of keyboard keys: 85, Keyboard pitch: 18.4 mm, Keyboard stroke: 1.7 mm
 Multi gesture touchpad with integrated mouse button functionality
 Tablet Pen, stored in pen garage
 Touch-screen

Wireless technologies

Antennas	2x dual band for WLAN, 2x for LTE, Bluetooth shared with WLAN
Bluetooth	v5.0
Integrated WLAN	Intel® Dual Band Wireless-AC9560 11ac with Bluetooth 5.0
WLAN encryption	WEP, WPA, WPA2
WLAN notes	Import and usage according to country-specific regulations.
Integrated LTE or UMTS	LTE Sierra Wireless EM7455 (Cat. 6)
LTE/UMTS/GPS notes	Including GPS functionality Import and usage according to country-specific regulations.
GPS	Embedded in 3G/4G module if configured with WWAN
AC Adapter	19 V / 65 W (3.42 A), 100 V - 240 V, 50 Hz - 60 Hz, 3-pin (grounded) slim and light AC-Adapter
AC adapter	19 V / 65 W (3.42 A)
Notes	65W AC Adapter for usage with system/ min. 90W AC Adapter for usage with Port Replicator
Rated voltage range	100 V - 240 V (AC Input)
Rated frequency range	50 Hz - 60 Hz
1st battery options	Lithium Polymer battery 3-cell, 45 Wh
1st battery	Li-Ion battery 3-cell, 45 Wh, 45 Wh
Battery features	Quick Charge: 80% in 1 h
Runtime 1st battery	12.10 h
Battery notes	Battery runtime information is based on worldwide acknowledged BAPCo® MobileMark® 2014 (office productivity). Refer to www.bapco.com for additional details. The BAPCo® MobileMark® Benchmark provides results that enable direct product comparisons between manufacturers. It does not guarantee any specific battery runtime which actually can be lower and may vary depending on product model, configuration, application and power management settings. The battery capacity decreases slightly with every re-charge and over its lifetime.

Dimensions / Weight / Environmental

Dimensions (W x D x H)	299 x 209 x 18.79 mm back (w/o rubber feet) mm 11.77 x 8.23 x 0.74 back inch
Weight	from 1.2 kg
Weight (lbs)	2.65 lbs
Weight notes	Weight may vary depending on actual configuration (including battery pack)
Operating ambient temperature	Running: 5 - 35 °C; Packed -10 - 60 °C
Operating relative humidity	Running: 20 - 80% (relative humidity); Packed: 20 - 80% (relative humidity)
Product	LIFEBOOK U729X
Model	U729X
Europe	CE CB
Compliance link	https://sp.ts.fujitsu.com/sites/certificates

Additional Software

Additional software (preinstalled)	Adobe® Reader® (pdf reader) CyberLink YouCam (webcam software) Fujitsu Display Manager Fujitsu DeskUpdate (driver and utility tool) ShockSensor Utility Power Saving Utility Fujitsu Plugfree Network (network management utility) EasyGuide online user documentation Microsoft Office (1 month trial for new Microsoft® Office 365 customers. Buy Microsoft Office.)
Additional software (optional)	Recovery DVD for Windows® Drivers & Utilities DVD (DUDVD) optional CyberLink PowerDVD BD (playback software for Blu-ray Disc™) CyberLink PowerDVD DVD (playback software for DVD) CyberLink YouCam (webcam software) Nero (backup and burning software)

Manageability

Manageability technology	DeskUpdate Driver management PXE 2.1 Boot code Wake up from S5 (off mode) WoL (Wake on LAN)
Manageability software	DeskView Client DeskView Instant BIOS Management
DeskView components	Inventory Management BIOS Management Driver Management Security Management Alarm Management
Supported standards	WMI (Windows Management Instrumentation) PXE (Preboot Execution Environment) DMI (Desktop Management Interface) SMBIOS (System Management BIOS) WBEM (Web Based Enterprise Management) CIM (Common Information Model) BootP (made4you)
Manageability link	http://www.fujitsu.com/fts/manageability

Security

Physical Security	Kensington Lock support
System and BIOS Security	Absolute Persistence® technology capable BIOS EraseDisk (optional) Optional: Trusted Platform Module (TPM 2.0)
User Security	Hard disk password User and supervisor BIOS password Embedded fingerprint sensor (optional) Workplace Protect (secure authentication solution) Smartcard reader (integrated) Embedded PalmSecure™ sensor (optional)

Warranty

Warranty period	2 years (for countries within EMEA)
Warranty type	Bring-in Service / Collect & Return Service (depending on country)
Warranty Terms & Conditions	http://www.fujitsu.com/warranty

Product Support Services - the perfect extension

Recommended Service	9x5, Onsite Response Time: Next Business Day
Spare Parts availability	5 years after end of product life
Service Weblink	http://www.fujitsu.com/emeia/products/product-support-services/

Recommended Accessories

USB Type-C Port Replicator



The FUJITSU USB Type-C Port replicator is the perfect solution for connecting FUJITSU mobile clients with a single USB Type-C plug. It allows you to charge and transfer data at the same time via only one cable in order to support your first steps towards a clean desk environment. High speed data transfer through USB 3.1 and Gigabit LAN make it possible to be more flexible and work faster.

Order Code:
S26391-F1667-L100

USB Port Replicator PR09



The new FUJITSU USB Port Replicator PR09 is the perfect solution for shared desk environments within a hyperconnected world. It connects your mobile system to your main peripherals with a single USB plug. This Port Replicator is equipped with the most powerful DisplayLink chipset supporting high performance video streaming with Dualhead-DisplayPort. Highest data throughput is guaranteed due to an USB Type-C based Gen2 Hub-Controller enabling up to 10Gbit/s data streaming. The newest version of USB Power Delivery chipset (PD3.0) provides powerful charging during your workday.

Order Code:
S26391-F6007-L500

Battery 3 cell 45Wh

The 3 cell 45 Wh battery requires a voltage of 10.8 V and has a capacity of 4170 mAh. The weight of the battery is 255 gms and the recharge time of the cell is 60 minutes for a 80% charge and 150 minutes for a complete 100% charge.

Order Code:
S26391-F1626-L100

AES Pen



Take your creativity to the next level, with the most natural pen experience with the AES Pen with replacement stylus tips. With pen nibs that are very thin, you can experience the writing and signing behavior of an ink pen.

Order Code:
S26391-F1669-L500

Wireless Notebook Mouse WI610



The Wireless Notebook Mouse WI610 uses wireless 2.4 GHz technology, and an ultra-high resolution switchable sensor to give you the precision and reliability you need (1000/1500/2000 dpi). Sporting a stylish silver-black finish, the WI610 wireless mouse is well suited to all environments.

Order Code:
S26381-K460-L100

Microsaver® DS Ultra thin



The Fujitsu Kensington MicroSaver® DS Ultra-Thin notebook lock is the ultimate defense for even the thinnest notebooks. The patented T-bar locking mechanism along with an advanced carbon-tempered steel cable design provides excellent security. It also includes Kensington Master Access so you can manage an unlimited number of locks with a single master key.

Order Code:
S26361-F1650-L900

ADATA UC350 USB Type-C



The ADATA UC350 USB Type-C is a beautiful, elegantly designed device that can outperform the vast majority of USB Flash Drives available on the market today. The gold-colored UC350 is a remarkably attractive, while its universality makes it compatible with every device. For convenient usability, it comes with a regular USB connector and a reversible USB Type-C plug for instant connections. Incredibly fast transfer speeds of up to 100MB/sec (read) and 30MB/sec (write) are possible, combining the convenience of Type-C with the speeds of USB 3.1. Available in 32 GB and 64 GB versions.




Order Code:
S26391-F6048-L464

ADATA SE730H External Solid State Drive



The A-DATA SE730H is not only beautifully designed, but is also the most compact external SSD on the market today. With its 500 MB/s write and read speeds combined with USB 3.1 Gen. 2 (10 Gbps), it ushers in a new era of high speed, making it possible to transfer a 5GB full HD movie in only 16 seconds. For convenient usability, it connects via USB 3.1 Gen 2 with a reversible Type-C connector for instant connections. The new SE730H has IP68 dust and waterproof rating and has passed the military-grade shock test, ensuring the safety of your data when travelling or if you accidentally drop the device.

Order Code:
S26391-F6048-L525

Privacy Filters		To use privacy filters is a must in times of increased safety requirements. Fujitsu's Privacy Filters block unauthorized views on your screen while you are sitting in an external meeting or working in a train. The front view remains clear for the user's eyes only. The filters are easy to attach and what's more: They also protect your screen from small scratches and damages.	Order Code: S26391-F6098-L213
MANASSE 14		The Plevier Manasse 14 leather case is a compact and classic carrier for on the go. Available for notebooks up to 14 inches with a padded compartment, the sleeve ensures protection for your device while providing a sleek and subtle design in a black leather nappa shade.	Order Code: S26391-F1193-L62
TACAN 14		The Plevier Tacan 14 leather notebook bag provides a diverse range of features to optimize your carrier needs. With a shoulder strap, fast access pocket on the rear side and two compartments for your device and additional accessories, the bag provides multifunctional and protective space for your belongings. Its brown leather design creates a sleek finish to create a carrier that is high quality in both functionality and appearance.	Order Code: S26391-F1193-L64

More information

Fujitsu products, solutions & services

In addition to FUJITSU Tablet LIFEBOOK U729X, Fujitsu provides a range of platform solutions. They combine reliable Fujitsu products with the best in services, know-how and worldwide partnerships.

Fujitsu Portfolio

Build on industry standards, Fujitsu offers a full portfolio of IT hardware and software products, services, solutions and cloud offering, ranging from clients to datacenter solutions and includes the broad stack of Business Solutions, as well as the full stack of Cloud offering. This allows customers to leverage from alternative sourcing and delivery models to increase their business agility and to improve their IT operation's reliability.

Computing Products

www.fujitsu.com/global/products/computing/

Software

www.fujitsu.com/software/

More information

Learn more about FUJITSU Tablet LIFEBOOK U729X, please contact your Fujitsu sales representative or Fujitsu Business partner, or visit our website.
www.fujitsu.com/fts/tabletpc

Fujitsu green policy innovation

Fujitsu Green Policy Innovation is our worldwide project for reducing burdens on the environment. Using our global know-how, we aim to contribute to the creation of a sustainable environment for future generations through IT. Please find further information at <http://www.fujitsu.com/global/about/environment>



Copyrights

All rights reserved, including intellectual property rights. Designations may be trademarks and/or copyrights of the respective owner, the use of which by third parties for their own purposes may infringe the rights of such owner. For further information see <http://www.fujitsu.com/fts/resources/navigation/terms-of-use.html>
Copyright 2019 Fujitsu Technology Solutions GmbH

Disclaimer

Technical data is subject to modification and delivery subject to availability. Any liability that the data and illustrations are complete, actual or correct is excluded. Designations may be trademarks and/or copyrights of the respective owner, the use of which by third parties for their own purposes may infringe the rights of such owner.

CONTACT

Fujitsu Technology Solutions GmbH
Website: www.fujitsu.com/fts
2019-08-01 EM-EN

All rights reserved, including intellectual property rights. Designations may be trademarks and/or copyrights of the respective owner, the use of which by third parties for their own purposes may infringe the rights of such owner. For further information see <http://www.fujitsu.com/fts/resources/navigation/terms-of-use.html>
Copyright 2019 Fujitsu Technology Solutions GmbH