

LEGION CREATOR 7i (15")

CREATE AMAZING.

A precision-crafted chassis jacketed in high-grade aluminum and available in Dark Moss, Lenovo™ Legion Creator 7i has been meticulously machined to deliver maximum performance. Breathtaking color accuracy, FHD resolution and high dynamic range come standard for a creation devices that delivers everything with zero compromises. Further enjoy ultra-long battery life in a sleek and slim performance machine with up to 10th generation Intel® Core™ i9 HK processors and up to NVIDIA® GeForce RTX™ graphics.

WHY YOU SHOULD BUY THE LENOVO LEGION CREATOR 7i (15")



Big time creation

Experience gaming immersion like never-before with up to 10th generation Intel® Core™ i9HK processors, 16 GB 2933 MHz DDR4 memory, and 1 TB M.2 NVMe PCIe SSD storage, all thermally optimized via Legion Coldfront 2.0.



RTX. It's On.

With up to the latest NVIDIA® GeForce RTX™ graphics behind you, you can enjoy the depth and visual fidelity of real-time ray-tracing. RTX, It's On.



Every detail matters

Legion Creator 7i features a crystal-clear 15.6" WVA FHD display with 100% Adobe RGB to immerse you in a world of truly vivid color. Delta E<2 color calibration technologies help creators achieve faithful tonal accuracy, letting them color in their own universes with clear conviction.



Tailor-made for content creation

Lenovo Vantage now features a new UI design as well as a full suite of designer-favorite applications, including Adobe Creative Cloud apps. As an ISV-validated device, the Legion Creator 7i is compatible with all professional software, ensuring that content-creation applications run smoothly.



WWW.LENOVO.COM



Lenovo™

LEGION CREATOR 7i (15")

SPECIFICATIONS

Lenovo Legion Creator 7 15IMH-05*

PERFORMANCE

Processor

10th Generation Intel® Core™ i9-10980HK
10th Generation Intel® Core™ i7-10875H
10th Generation Intel® Core™ i7-10750H
10th Generation Intel® Core™ i5-10300H

Operating System

Windows 10 Home or Windows 10 Pro

Graphics

NVIDIA® GeForce RTX™ 2080 Super Max-Q
NVIDIA® GeForce RTX™ 2070 Super Max-Q
NVIDIA® GeForce RTX™ 2070 with Max-Q Design
NVIDIA® GeForce RTX™ 2060
NVIDIA® GeForce® GTX 1660 Ti

Memory

3200 MHz : 2 x 8 GB / 2 x 16 GB¹
2933 MHz : 2 x 8 GB / 2 x 16 GB²

Storage

PCIe SSD : 512 GB / 1 TB

Battery³

Up to ~8 Hours (80 Wh; 4 Cells)

DESIGN

Display

15.6" FHD (1920 x 1080) WVA (144 Hz /
<5 ms Response Time / 100% Adobe RGB /
500 nits / VESA DisplayHDR 400 Certified /
Dolby Vision™ Enabled / NVIDIA® G-Sync)

Dimensions (W x D x H)

(mm) : 359.34 x 259.04 x 19.9
(inches): 14.15" x 10.19" x 0.78"

Weight

Starting at 2.25 kg (4.9 lbs)

Keyboard

RGB Lighting Keyboard

Color

Dark Moss

Wow Features

100% Adobe RGB Display with Delta E<2 and HDR 400
Up to NVIDIA® GeForce RTX™ 2080 Super Max-Q Graphics Card
4-sides Narrow Bezel
MUX Switch for iGPU / dGPU
Dolby Atmos® and Dolby Vision™

CONNECTIVITY

Webcam

Built-in HD Webcam (720p) with Privacy Shutter

WLAN

Intel® WiFi 6 (802.11 ax)

Bluetooth®

Bluetooth® 5.0

Audio

2 x 2W Dolby Atmos® Speaker System for Gaming with Chamber

Input/Output (I/O) Ports

Left Side

1 x Type-C™ (Thunderbolt™, DisplayPort™ 1.4, USB 3.1 Gen 2⁴)

1 x Type-C™ (DisplayPort™ 1.4, USB 3.1 Gen 1⁵)

1 x Audio Jack

Right Side

1 x USB 3.1 Gen 1⁵
(with always-on charge)

Rear

2 x USB 3.1 Gen 2⁴

1 x HDMI™ 2.0

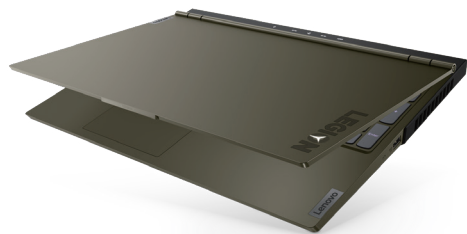
1 x RJ45

1 x Kensington® Lock

1 x DC-In

PRELOADED SOFTWARE

- Lenovo Vantage
- McAfee® Antivirus
- Corsair® iCUE
- PC Manager⁶
- Lenovo Antivirus Plus⁶
- Magic Y Key⁶



¹ Available only for i9-10980HK and i7-10875H processors.

² Available only for i7-10750H and i5-10300H processors.

³ All battery life claims are approximate and based on results using the MobileMark® 2018 v1.0.2.46 battery life benchmark test. Actual battery life will vary and depends on many factors such as product configuration and usage, software use, wireless functionality, power management settings, and screen brightness. The maximum capacity of the battery will decrease with time and use.

⁴ The actual transfer speed of the USB 3.1 Gen 2 will vary and, depending on many factors, such as the processing capability of host and peripheral devices, file attributes and other factors related to system configuration and your operating environments, will be slower than a speed of 10 Gbit/s.

⁵ The actual transfer speed of the USB 3.1 Gen 1 will vary and, depending on many factors, such as the processing capability of host and peripheral devices, file attributes and other factors related to system configuration and your operating environments, will be slower than a speed of 5 Gbit/s.

⁶ PRC only.

LENOVO SERVICES

Warranty Upgrades - On-site / In-Home Service

Maximizes PC uptime and productivity by providing convenient, fast repair services in your own home.

Accidental Damage Protection

Avoid the hassles of unexpected repair costs. Provides coverage for non-warranted damage incurred under normal operating

conditions, such as minor spills, drops or damage to the integrated screen.

Warranty Extensions (1-to-3 Years Total Duration)

This fixed-term, fixed-cost service helps accurately budget for PC expenses, protect your valuable investment and potentially lower the cost of ownership over time.

OPTIONS & ACCESSORIES



Lenovo Legion M500 RGB Gaming Mouse



Legion H300 Stereo Gaming Headset



Lenovo Legion 15.6" Recon Gaming Backpack

* Example of Lenovo Legion catalogue naming convention

Legion	Creator	7	1	5	I	M	H	-	0	5
Sub-brand	Form factor	Position	Screen size or volume (litre)	Platform	Generation					

Intel® platform codes

Haswell H81: IHH, Broadwell U: IBU, Skylake Z170: ISZ, Skylake B150: ISB, Kabylake: IKL, Skylake H110/H170: ISH, Skylake U: ISU, Apollo Lake: IAP, Coffee Lake B360: ICB, Coffee Lake H: ICH, Coffee Lake Z370 Overclock: ICO, Comet Lake H: IMH.



WWW.LENOVO.COM

Lenovo reserves the right to alter product offerings and specifications at any time, without notice. Lenovo makes every effort to ensure accuracy of all information but is not liable or responsible for any editorial, photographic or typographic errors. All images are for illustration purposes only. For full Lenovo product, service and warranty specifications visit www.lenovo.com. Lenovo makes no representations or warranties regarding third party products or services. **Trademarks:** The following are trademarks or registered trademarks of Lenovo: Lenovo, the Lenovo logo, ideapad, IdeaCentre, yoga and yoga home. Microsoft, Windows and Vista are registered trademarks of Microsoft Corporation. Ultrabook, Celeron, Celeron Inside, Core Inside, Intel, Intel Logo, Intel Atom, Intel Atom Inside, Intel Core, Intel Inside, Intel Inside Logo, Intel vPro, Itanium, Itanium Inside, Pentium, Pentium Inside, vPro Inside, Xeon, Xeon Phi, and Xeon Inside are trademarks of Intel Corporation in the U.S. and/or other countries. Other company, product and service names may be trademarks or service marks of others. Visit www.lenovo.com/lenovo/us/en/safecomp/ periodically for the latest information on safe and effective computing.

©2020 Lenovo. All rights reserved.



Lenovo™