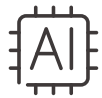


# Pan/Tilt AI Home Security Wi-Fi Camera

2K  
QHD

TC72



## Human/Pet/Vehicle Detection

Baby Crying  
Detection

Motion Detection  
and Tracking

Night Vision up to  
30 ft



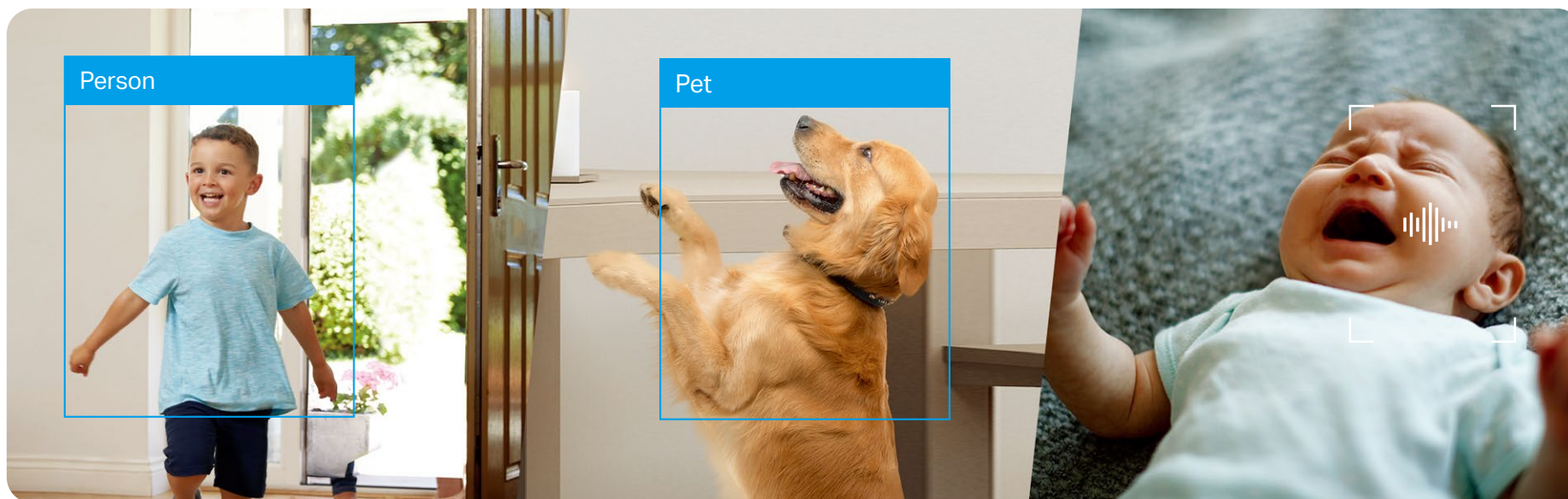
works with | **amazon alexa**

works with  
**Google Home**

## // Highlight

### Smart AI Detection and Notification

Smart AI identifies people, pets, and vehicles while also recognizing abnormal sounds, notifying you as needed.



## // Features



### 2K QHD<sup>A</sup>

Now with 1.7 times more pixels than 1080p, providing clearer videos and photos



### Motion Detection and Tracking

Whenever a camera detects motion, it will automatically follow the subject.



### Field of View

360° horizontal range



### Night Vision up to 30 ft

Provides a visual distance of up to 30 ft in total darkness



### Activity Zone

Notifies you when activity is detected in specific zones



### Cloud Storage Supported<sup>‡</sup>

Store videos by using cloud storage services



### Customizable Block Zones

Set customizable block zones to keep private areas from being monitored.



### Two-Way Audio

Enables communication through a built-in microphone and speaker



### Local microSD Storage<sup>†</sup>

Store up to 512 GB of video on a microSD card

## // Specifications

### Camera

- Image Sensor: 1/3"
- Resolution: 2K QHD (2560 × 1440 px)
- Night Vision: 850 nm IR LED (up to 30 ft)
- Lens: F/NO: 2.0±5%; Focal Length: 4 mm±5%
- View Range: 360° horizontal and 114° vertical

### Audio

- Audio Communication: Two-way Audio
- Audio Input & Output: Built-in microphone and speaker

### Video

- Video Compression: H.264
- Frame Rate: 15/20/25/30 fps (Default: 15 fps)
- Video Streaming: 2560 × 1440 px

### Activity Notifications

- Input Trigger: Motion Detection, Person Detection, Pet Detection, Cat Mews Detection, Dog Bark Detection, Baby Crying Detection, Breaking Glass Detection, Vehicle Detection
- Output Notification: Notification, Snapshot(Tapo Care), Clips(Tapo Care).

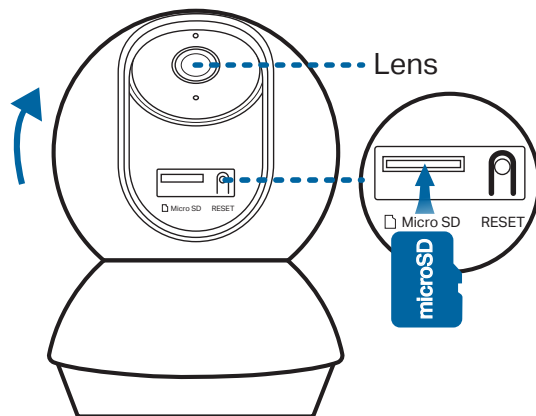
### Network

- Wireless Protocols: IEEE 802.11b/g/n, 2.4 GHz<sup>s</sup>
- Frequency: 2.4 GHz
- Wireless Security: WPA/WPA2-PSK
- Security: 128 bit AES encryption with SSL/TLS
- Protocol: TCP/IP, DHCP, ICMP, DNS, NTP, HTTPS, TCP, UDP, ONVIF

## // Specifications

### Hardware

- Camera Adapter Input: 100-240 V, 50/60 Hz, 0.3 A
- Camera Adapter Output: 9.0 V, 0.6 A (DC Power)
- Typical Power Consumption: 3.15 W
- Maximum Power Consumption: 6.3 W
- External Storage: microSD card slot<sup>†</sup> (Supports up to 512 GB)
- Camera Dimensions (Lx W x H): 3.3 x 3.4 x 4.6 in. (85.4\*86.8\*117.7 mm)
- Power Cord Length: 3 m



### Others

- Certification: CE, UKCA, RoHS, RCM, WEEE, EAC
- Package Contents:
  - TC72 Camera
  - DC Power Adapter
  - Quick Start Guide
  - Mounting Screws
  - Mounting Template
  - Mounting Anchors
  - Camera Base
- Operating Temperature: 0 °C ~ 40 °C (32 °F ~ 104 °F)
- Operating Humidity: 10%~90%RH, Non-condensing

<sup>†</sup>microSD card needs to be purchased separately. Actual storage capacity depends on the size of the microSD card used.

<sup>‡</sup>Subscribe for cloud storage at <https://www.tapo.com/tapocare/>

<sup>§</sup>TC72 does not have an Ethernet port and can only be connected via Wi-Fi.

<sup>\*</sup>Compatible with Alexa and Google Assistant supported displays. User experience is dependent on the connected device's specifications.

Specifications are subject to change without notice. All brands and product names are trademarks or registered trademarks of their respective holders.

©2023 TP-Link