

# ThinkBook 16p G5 IRX

Dive into the future of professional computing with the latest ThinkBook equipped with up to 14th Generation Intel® Core™ i9 Processor, dedicated Nvidia RTX 4060 graphics, and Lenovo LA3 AI-chip based intelligent performance tuning dispatcher solution. The powerful Intel® Core™ i9 processors maximize performance for your most challenging needs and deliver ultra-efficient multitasking, so your PC can keep up with the most demanding creativity software. The 16" display with 16:10 aspect ratio, X-rite factory color calibration and Dolby Vision amplifies screen real estate and delivers stunning color clarity for content creators working on heavy files that require minute detailing and analyses.



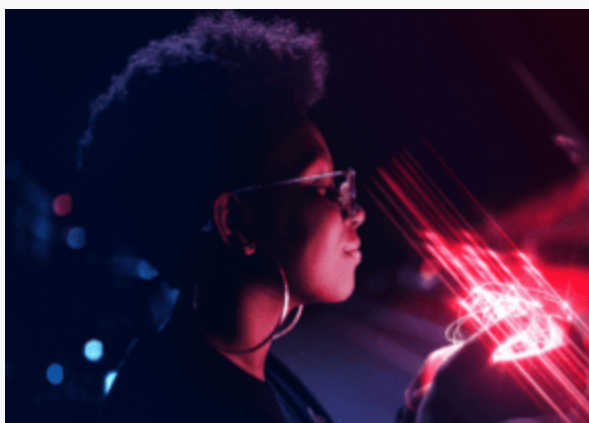
## Redefining possibilities with powerful performance and groundbreaking on-device AI

ThinkBook combines the style and user experience of consumer devices with the security and business-class support of ThinkPad.

For high-performance users handling resource-intensive tasks without compromising battery life or meeting extended usage requirements for on-the-go users, the PC with its Lenovo LA3 AI chip-based battery optimization technology excels in recognizing different user scenarios and adapting the battery management strategy accordingly.

Like its predecessor, the notebook's Pogo pin connectivity transforms the device into a highly versatile productivity hub. Connect your Lenovo Magic Bay peripherals at ease, from the webcam to LTE and now the recently launched Magic Bay Studio. Dedicated to enhancing your PC/accessories as a unified eco-system, it elevates your audio experience and delivers professional video quality for meetings. Plus, the cableless design ensures a clutter-free workspace, ramping up productivity.

Enhance virtual meetings with the advanced web conferencing capabilities of this laptop, equipped with High Definition (HD) Audio, Dolby® Atmos®, smart noise-cancelling technology, and an FHD 1080p + IR hybrid camera with a privacy shutter and fixed focus, ensuring crystal-clear video and immersive audio for seamless communication and collaboration.



# Perfect. Premium. Performance.

With even more multi-tasking power, this powerhouse of a device accelerates audio & video effects during video calls and meetings, including intelligent background blurring, noise cancellation in busy public spaces, automatic eye contact correction and image resolution enhancements. Efficiency meets convenience with the Flip to Start functionality, allowing you to seamlessly begin your device's operation with a simple flip. Crafted from premium materials, it presents a refined aesthetic.

## Turbocharge Your Productivity

Helping you deliver your best, faster, and easier; 14th Gen Intel® Core™ i9 processors maximize performance for real-world multitasking, stunning graphics, and more reliable connectivity. RTX 4060 graphics, boasting an astonishing 110+ TOPS deliver remarkable speed for content creation while Advanced Optimus guarantees efficient power usage.

## Rugged Resilience

The notebook's MIL-STD-810H military test certification guarantees durability against drops, vibrations, and challenging environmental conditions. Moreover, the aluminum top and bottom not only enhance its sophisticated design but also play a key role in fortifying its robust build.

## Security Beyond Encryption

Guard your data and digital identity with advanced security features that combine smart biometric authentication technologies with the FHD 1080p+IR camera, making it difficult for unauthorized users to gain access to the device. Intelligent Adaptive Dimming automatically adjusts screen brightness, reducing the risk of prying eyes in public spaces.



## Choose Sustainability at Every Step

Lenovo is helping to reduce its environmental impact by making the industry's broadest tech solutions portfolio more sustainable. Partner with us to implement sustainable, cost-efficient practices spanning the device lifecycle and make a meaningful difference in how you use technology.



### Recycled or Sustainable Product Materials:

Lenovo is innovating to increase energy efficiency and use of recycled content in our devices. Our partnership with like-minded technology like Intel® supports our goal towards a brighter, more sustainable future. With the use of recycled aluminum, our commitment to the environment is evident in every detail. The use of PCC recycled plastic reflects our dedication to environmental responsibility.

- 25% PCC plastic in battery pack; conscious choice to repurpose materials.
- 30% PCC plastic in speakers; high-quality sound with responsible resourcing.
- 50% PCC plastic in keycaps; contributing to a greener future.



### Recycled Shipping/Packaging Content:

Lenovo is focused on integrating sustainable materials and reducing waste through innovative packaging design. And we are steadily increasing our use of materials like FSC pizza box carton, recycled PIC, and paper screen sheet. Embracing eco-friendly practices, we present packaging for ThinkBook 16p that aligns with our green initiatives. Say goodbye to traditional plastic and embrace a greener tomorrow with us.

- FSC pizza box carton with paper-based handle on carton; secure grip while minimizing environmental impact.
- With 90% recycled PIC; it champions the circular economy.
- Ocean Bound Plastic bag and paper screen sheet; biodegradable and environmentally friendly alternative.



### Product PCC

25% PCC Plastic in battery pack, 30% PCC Plastic in speakers, 50% PCC Plastic in keycaps

### Asset Recovery Service:

Lenovo Asset Recovery Services (ARS) helps keep resources circulating by reusing parts wherever possible, refurbishing devices, and recycling assets, helping customers with lowering their environmental impact.

### Lenovo TruScale Device as a Service:

TruScale Device as a Service (DaaS) is a fully managed subscription-based model that offers access to a complete portfolio of hardware, software, and trusted services with a flexible payment approach—everything your business needs to support employees everywhere with consistent solutions and a predictable, transparent fee.

### Co2 Offset Service:

Lenovo Co2 Offset Service estimates Co2 emissions across the average lifecycle of your device, from manufacture to daily use to end of life, and gives you the option to offset them by supporting verified climate action projects. We offset carbon emissions associated with our devices by providing the option at point of purchase.

## Lenovo Services

Lenovo delivers tailored sustainability services, devices, and infrastructure solutions from our broad portfolio, working closely with you to support your target outcomes across the IT lifecycle..



### Premium Care Plus

- PC is protected from accidental damage
- Anytime, anywhere support
- Migrate important data and settings in an instant

## Accessories

### ThinkBook Bluetooth Silent Mouse

- Bluetooth mouse with silent buttons for noise-free operation
- Low-profile design suitable for both right-handed and left-handed users
- 4 buttons, 2-way scrolling with easy DPI adjustment: 2400, 1600, 800



PN: 4Y50X88824

# ThinkBook 16p G5 IRX

## Performance

**Processor**  
14th Generation Intel Core i5 / i7 / i9 Processor

**Operating System**  
Windows 11 Pro  
Windows 11 Home  
Windows 11 Home Single Language

**Graphics**  
NVIDIA GeForce RTX 4050  
NVIDIA GeForce RTX 4060

**Chipset**  
Intel HM770 chipset

**Memory <sup>1</sup>**  
Up to 32GB DDR5-5600 offering, 2x SO-DIMM

<sup>1</sup>The max memory is based on the test results with current Lenovo memory offerings.

**Storage <sup>2</sup>**  
Up to two M.2 PCIe NVMe SSD  
M.2 2280 SSD up to 2TB

<sup>2</sup>The system supports dual SSD via two M.2 slots, but Lenovo only offers one SSD configuration, another SSD slot for user self-extension. The max storage capacity is only technical readiness and may be different with current Lenovo storage offerings.

**Audio**  
High Definition (HD) Audio  
2W x2 woofers and 2W x2 tweeters, Dolby Atmos, sound by harman/kardon  
Dual-microphone array with noise-cancelling

**Camera <sup>\*</sup>**  
FHD 1080p + IR hybrid, with privacy shutter

**Battery <sup>3</sup>**  
80Wh (up to 6.2 hr) battery  
Rapid Charge Pro

<sup>3</sup>Battery life claims are approximate maximum. Actual result will vary depending on many factors and the maximum battery capacity will decrease with time and use.

**Power Adapter<sup>\*</sup>**  
230W slim tip adapter  
300W slim tip adapter

## Design

**Display <sup>4</sup>**  
16" 2.5K (2560x1600) IPS Anti-glare 16:10  
- 400nits, 100% sRGB, 60Hz, Eyesafe, X-Rite factory color calibration

16" 3.2K (3200x2000) IPS Anti-glare 16:10  
- 430nits, 100% DCI-P3, 165Hz, Eyesafe, X-Rite factory color calibration

<sup>4</sup>IPS (in-plane switching) technology may refer to IPS, PLS, ADS, AHVA, AAS.

**Keyboard**  
6-row, spill-resistant, numeric keypad, backlight

**Touchpad**  
Glass surface touchpad  
80 x 135 mm (3.15 x 5.31 inches)

**Dimensions <sup>5</sup>**  
354.6 x 258.2 x 19.9 mm (13.96 x 10.17 x 0.78 inches)

<sup>5</sup>The system dimensions may vary depending on configurations.

**Weight <sup>6</sup>**  
Starting at 2.2 kg (4.85 lbs)

<sup>6</sup>The system weight is approximate and may vary depending on configurations

**Color**  
Storm grey, dual-tone design

**Case material**  
Aluminium (top)  
Aluminium (bottom)

**Special Features**  
AI Chip: LA3  
Modern Standby

## Connectivity

**WLAN + Bluetooth<sup>\*</sup> <sup>7</sup> <sup>8</sup>**  
802.11ax (Wi-Fi 6E), Bluetooth 5.3

<sup>7</sup>Wi-Fi 6E is only enabled on Windows 11 and operates as Wi-Fi 6 with Windows 10.

<sup>8</sup>Bluetooth 5.3 is hardware ready but may run at a lower version due to OS limitations.

**Ports**  
2x USB-A (USB 5Gbps / USB 3.2 Gen 1)  
1x USB-A (USB 10Gbps / USB 3.2 Gen 2), Always On  
2x USB-C (Thunderbolt 4 / USB4 40Gbps), with USB PD 3.0 & DP 1.4  
1x HDMI 2.1, up to 8K/60Hz  
1x SD card reader  
1x Headphone / microphone combo jack (3.5mm)  
1x Power connector  
1x Magic Bay (pogo pin connector)\*

**Docking**  
Docking support via Thunderbolt

## Security & Privacy

**Security**  
Firmware TPM 2.0  
Kensington Nano Security Slot  
Touch style MOC fingerprint reader on smart power button  
Camera privacy shutter  
IR camera for Windows Hello (facial recognition)

## Certifications

**Green Certifications <sup>9</sup> <sup>10</sup> <sup>11</sup> <sup>12</sup>**  
EPEAT Gold Registered  
ENERGY STAR 8.0  
ErP Lot 6  
ErP Lot 26  
TCO Certified 9.0  
RoHS compliant

<sup>9</sup>The items listed under the "Green Certifications" section may not only refer to certification but also registration (self-declaration).

<sup>10</sup>EPEAT registration and ENERGY STAR certification are dependent on system OS.

<sup>11</sup>EPEAT is registered where applicable, please see epeat.net for registration status by country.

<sup>12</sup>EPEAT is registered where applicable, please see epeat.net for registration status by country.

**Other Certifications**  
TÜV Rheinland Low Blue Light (Hardware Solution)  
Eyesafe Certified 2.0  
MIL-STD-810H

Items with \* are optional and only available on selected models. Information presented here may represent the maximum possible configurations for this product, but it does not necessarily reflect what is available in your region. Please ask your rep or check the specifications for specific Part Numbers in your region. © 2024 Lenovo. Products are available while supplies last. Lenovo is not responsible for photographic or typographic errors. Lenovo, the Lenovo logo, ThinkPad, ThinkCentre, ThinkBook, ThinkStation and ThinkVision are trademarks or registered trademarks of Lenovo. 3rd party product and service names may be trademarks of others. Depending on factors such as the processing capability of peripheral devices, file attributes, system configuration and operating environments, the actual data transfer rate of USB connectors will vary and is typically slower than published standards.