



The product images are for illustration purposes only. Actual product appearance, ports, keyboard layout, and accessories may vary by model.

- Intel Core Ultra 9 285H, 16C (6P + 8E + 2LPE) / 16T, Max Turbo up to 5.4GHz, 24MB Intel Smart Cache
- 64GB LPCAMM2 LPDDR5X-7467
- 1TB SSD M.2 2280 PCIe 4.0x4 NVMe Opal 2.0
- NVIDIA RTX PRO 2000 Blackwell Generation 8GB GDDR7 Laptop GPU
- Windows 11 Pro, WE (EN/FR/DE/NL/IT)
- Case color - Black
- 3Y Premier TP WS WHB (CPN), CO2 Offset 0.5 ton (2nd Generation Carbon Offset Projects)

Premier Support - A direct 24x7x365 line to our most elite technicians.

- Advanced technical support, 24x7x365, in more than 100 markets
- Comprehensive hardware & OEM software support
- Single point of contact for simplified end-to-end case management
- Technical Account Managers for proactive relationship and escalation management
- Priority on service delivery and repair parts
- Lenovo Service Connect Portal for customized reporting and product support

Accidental Damage Protection - Protection of your PC from the unexpected.

Experience shows that a significant portion of devices may be damaged (and not covered under warranty) in the first three years. Lenovo's Accidental Damage Protection service covers accidents beyond the system warranty such as drops, spills, bumps and even electrical surges. Make sure your new device has maximum protection, avoid unplanned costs and get peace of mind.

Base Warranty - Included with the systems you purchase, default 1- or 3-year coverage window.

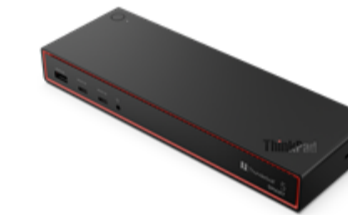
Warranty Extensions & Upgrades - Service and protection that's right for your circumstances.

- Pick Up & Return Courier
- Onsite Support
- Technician Installed Customer
- Replaceable Unit Service
- International Warranty Upgrade

Recommended Accessories Italy



Lenovo Dual-Mode Wireless ANC Headset 6550 (USB-C, Teams)
4XD1S19778



ThinkPad Thunderbolt 5 Smart Dock 7500 - Italy/Chile
40BA0265IT



ThinkPad Bluetooth Presenter Mouse (Aura Edition)
4Y51T62792

>> [View More Accessories](#)

Recommended Services

Best	Better	Good
5Y Premier Support for AIPC upgrade from 3Y Premier Support (5WS1U94139)	4Y Premier Support for AIPC upgrade from 3Y Premier Support (5WS1U94138)	3Y Premier Support Plus for AIPC upgrade from 3Y Premier Support (5WS1U94109)

PERFORMANCE**Processor**

Intel Core™ Ultra 9 285H, 16C (6P + 8E + 2LPE) / 16T, Max Turbo up to 5.4GHz, 24MB Intel® Smart Cache

AI PC Category

AI-Ready Workstations

NPU

Integrated Intel® AI Boost, up to 13 TOPS

Graphics

NVIDIA® RTX PRO 2000 Blackwell Generation 8GB GDDR7 Laptop GPU

Chipset

Intel® SoC Platform

Memory

64GB LPCAMM2 LPDDR5X-7467

Memory Slots

One LPCAMM2 connector, dual-channel

Max Memory

Up to 64GB (1x 64GB LPCAMM2), upgradable

Storage

1TB SSD M.2 2280 PCIe® 4.0x4 NVMe® Opal 2.0

Storage Slot

Two M.2 2280 PCIe® 4.0 x4 slots

Max Storage Support^[1]

Up to two M.2 2280 Gen 5 Performance SSD; up to 8TB, 4TB each

RAID Preset

None

Card Reader

SD Express 7.0 Card Reader

Audio Chip

SoundWire®, Cirrus Logic® CS42L43 codec

Speakers

Stereo speakers, 2W x2, Dolby Atmos®

Microphone

2x, Array

Camera

5.0MP + IR with Privacy Shutter and Computer Vision Human Presence Detection on ISP

Battery

90Wh

Power Adapter

140W USB-C® GaN (3-pin)

DESIGN**Display**

16" WUXGA (1920x1200) IPS 500nits Anti-glare, 100% sRGB, 60Hz, Low Power, Eyesafe®, TÜV Low Blue Light

Screen-to-Body Ratio

- 90.9% (Tandem OLED models)
- 91.7% (IPS models)

Color Calibration

X-Rite® Factory Color Calibration

Pen

Pen Not Supported

Keyboard

Backlit, Italian

Dimensions (WxDxH)^[2]

354.3 × 241.0 × 9.9 / 15.8 (front / rear), 20.6 (maximum) mm 13.95 x 9.49 x 0.39 / 0.62 (front / rear), 0.81 (maximum) inches

Weight^[3]

Starting at 1.84 kg (4.06 lbs)

Case Color

Black

Case Material

Aluminium (Top), Aluminium (Bottom)

SOFTWARE**Operating System**

Windows® 11 Pro, WE (EN/FR/DE/NL/IT)

Bundled Software

Lenovo® AI Now + Intel® Connectivity Performance Suite

CONNECTIVITY**WLAN + Bluetooth**

Intel® Wi-Fi® 7 BE201, 802.11be 2x2 + BT5.4, vPro®^[4]

WWAN

WWAN Not Supported

SIM Card

No physical SIM card inbox

Ethernet

No Onboard Ethernet

NFC

No NFC

Standard Ports

- 1x USB-A (USB 10Gbps / USB 3.2 Gen 2), Always On
- 2x Thunderbolt™ 5, with USB PD 3.1 and DisplayPort™ 2.1, 140W input / 15W output
- 1x Thunderbolt™ 4, with DisplayPort™ 2.1 and USB PD 3.1, 140W input / 15W output
- 1x HDMI® 2.1, up to 8K/60Hz
- 1x Headphone / microphone combo jack (3.5mm)
- 1x SD Express 7.0 card reader
- 1x Kensington Nano Security Slot™

Docking

Various docking solutions supported via Thunderbolt™ or USB-C®. For more compatible docking solutions, please visit [Docking for ThinkPad® P1 Gen 8](#)

SECURITY & PRIVACY**Security Chip**

Discrete TPM 2.0 Enabled

Physical Locks

Kensington Nano Security Slot™, 2.5 x 6 mm

Smart Card Reader

No Smart Card Reader

Fingerprint Reader

Touch Style, Match-on-Chip, Integrated in Power Button

Other Security

- Bottom cover tamper detection
- Camera privacy shutter
- Computer Vision-based User Presence Sensing on Image Signal Processor (ISP)
- IR camera for Windows® Hello (facial recognition)

MANAGEABILITY**System Management**

Intel® vPro® Enterprise

SERVICE**Base Warranty**

3-year, Courier or Carry-in with 1-year Battery

Included Upgrade

3Y Premier TP WS WHB (CPN), CO2 Offset 0.5 ton (2nd Generation Carbon Offset Projects)

ACCESSORIES**CERTIFICATIONS****ISV Certifications**

Please visit [ISV certifications for Lenovo® Workstations](#)

Green Certifications

- ENERGY STAR® 9.0
- EPEAT™ Gold Registered
- RoHS compliant
- TCO Certified, generation 10

Mil-Spec Test

MIL-STD-810H military test passed

Other Certifications

- Intel Evo™ Platform
- Eyesafe® Certified 2.0
- TÜV Rheinland® Low Blue Light

MODEL

TopSeller : Yes **EAN / UPC / JAN:** 0199275929182
Announce Date: 2026-03-08 **End of Support** : 2032-04-25

- Please refer to the official [Lenovo store website](#) or contact a local Lenovo sales representative or authorized business partner for current inventory and purchase options.
- Lenovo reserves the right to change specifications without notice. To see more note information, please access the [web page](#).