

PHILIPS

WQHD monitor

Curved Business monitor

3000 series

34" (86.36 cm)

3440 x 1440 (WQHD)

34B2N3500C



Redefining workflow productivity

This 34" Philips WQHD monitor is equipped with a VA panel for wide viewing angles. The 120 Hz refresh rate ensures smooth performance. It features SoftBlue technologies to reduce eye strain and support all-day productivity.

Superb Picture Quality

- VA display delivers awesome images with wide viewing angles

Designed for the way you work

- Built-in stereo speakers for multimedia
- MultiView enables simultaneous dual connection and view
- D-Mode: Optimised for subtle greyscale perception
- Eyesafe-certified blue light protection and colour accuracy
- Curved display design for a more immersive experience
- SoftBlue Technology: for comfortable viewing

Easy to experience

- VESA mount for convenience
- HDMI ensures universal digital connectivity

Superb Picture Quality

- 120 Hz refresh rates for ultra-smooth images
- 1.07 billion colours for smooth colour gradations and detail

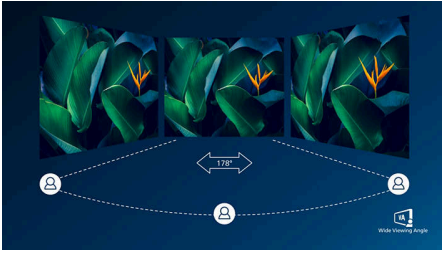
Curved Business monitor

WQHD monitor

34B2N3500C/00

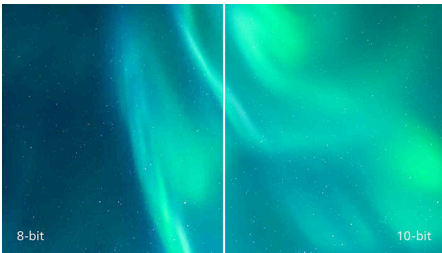
Highlights

VA display



The Philips VA LED display uses an advanced multi-domain vertical alignment technology that gives you super-high static contrast ratios for extra-vivid and bright images. While standard office applications are handled with ease, it is especially suitable for photos, web browsing, films, gaming and demanding graphical applications. Its optimised pixel management technology gives you a 178/178 degree extra-wide viewing angle, resulting in crisp images.

10-bit colours



The 10 bit display delivers rich colour depth with 1.07 billion colours and 12 bit internal processing for re-creating smooth, natural colours without gradations or colour banding.

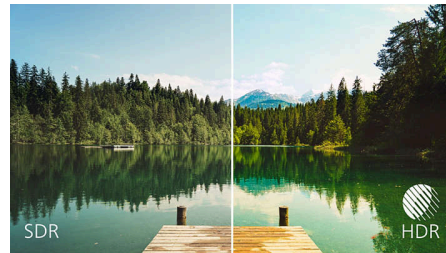
120 Hz fast refresh



The smoother the motion, the less strain on your eyes. This Philips monitor is equipped with an improved 120 Hz refresh rate. Whenever you

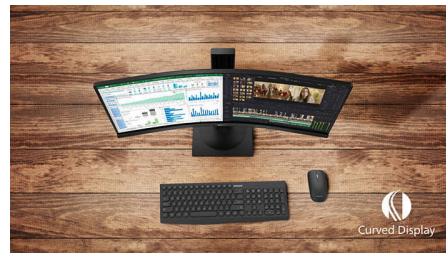
scroll, switch between applications or navigate complex spreadsheets, you experience smoother and more precise movements. That means you can work as long as you need with minimal visual fatigue—all while increasing the speed of your workflow.

High Dynamic Range (HDR)



High Dynamic Range delivers a dramatically different visual experience. With astonishing brightness, incomparable contrast and captivating colour, images come to life with much greater brightness while also featuring much deeper, more nuanced darks. It renders a fuller palette of rich new colours never before seen on a display, giving you a visual experience that engages your senses and inspires emotions.

Curved display design



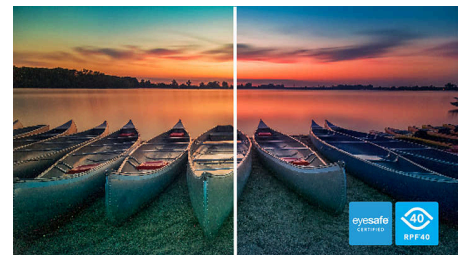
Desktop monitors offer a personal user experience, which suits a curved design very well. The curved screen provides a pleasant yet subtle immersion effect, which focuses on you at the centre of your desk.

Built-in stereo speakers



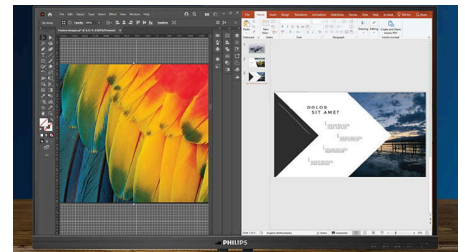
A pair of high-quality stereo speakers built into a display device. They may be visible front firing, or invisible down firing, top firing, rear firing etc. depending on model and design.

eyesafe® CERTIFIED 2.0 (RPF 40)



The Philips display meets the eyesafe® CERTIFIED 2.0 standard to truly protect you from long exposure to blue light. The always-on blue light filter not only helps reduce digital eye strain, but also guarantees colour integrity.

MultiView technology



With the ultra-high resolution Philips MultiView display, you can now experience a world of connectivity. MultiView enables active dual connect and view so that you can work with multiple devices like a PC and notebook simultaneously, for complex multitasking.



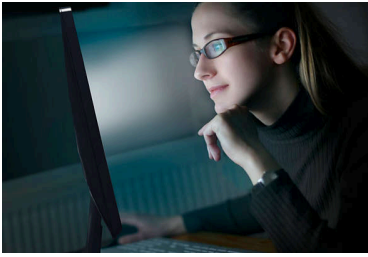
Curved Business monitor

WQHD monitor

34B2N3500C/00

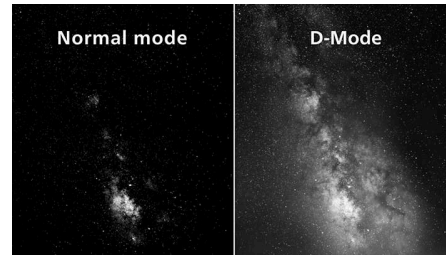
Highlights

SoftBlue Technology with Low Blue Light Panel



SoftBlue technology offers increased visual comfort and protection against adverse health effects caused by prolonged exposure to blue light. With the low blue-light panel, the ratio of display emission light in the range of 415-455 nm to 400-500 nm is reduced to less than 50%. As a result, the SoftBlue technology provides optimal visual comfort, minimises eye strain and supports sustained focus. Not to mention, SoftBlue LED technology is tested and TÜV Rheinland Low Blue Light (Hardware Solution) certified for its effectiveness in reducing blue light emissions.

D-Mode



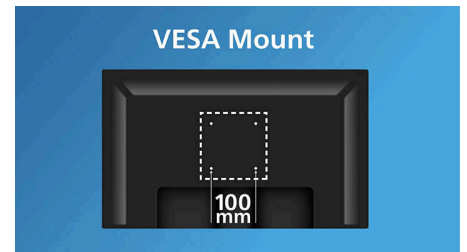
Reveal every hidden detail in the dark-toned areas of your display. D-Mode enhances greyscale detail to make subtle tonal differences easier to see. Based on the greyscale perception model defined by the DICOM Part 14 GSDF standard, it improves the visibility of details that standard display settings may miss. The result is clearer differentiation between subtle shades and improved detail visibility in greyscale content such as technical illustrations, scans and other high-detail imagery.

HDMI Ready



An HDMI-ready device has all the required hardware to accept High-Definition Multimedia Interface (HDMI) input. An HDMI cable enables high-quality digital video and audio to be transmitted over a single cable from a PC or any number of AV sources (including set-top boxes, DVD players, A/V receivers and video cameras).

VESA mount for convenience



Industry-standard VESA mounting holes ensure compatibility with most small form factor PCs and thin clients.

Curved Business monitor

WQHD monitor

34B2N3500C/00

Specifications

Picture/Display

Panel Size: 34 inch/86.36 cm
Aspect ratio: 21:9
LCD panel type: VA LCD
Backlight type: W-LED system
Pixel pitch: 0.23175 x 0.23175 mm
Brightness: 350 cd/m²
Display colours: 1.07B (10 bits)
Colour gamut (typical): NTSC area: 104%, sRGB area: 120%*
Contrast ratio (typical): 3500:1
SmartContrast: 50,000,000:1
Response time (typical): 4 ms (Grey to Grey)*
Viewing angle: 178° (H)/178° (V), @ C/R > 10
Picture enhancement: SmartImage
Maximum resolution:
3440 x 1440@100 Hz(HDMI),
3440 x 1440@120 Hz (DP)
Effective viewing area: 797.22 (H) x 333.72 (V) -
at a 1500 R curvature*
Scanning Frequency: HDMI: 30-160 kHz (H)/48 -
100 Hz (V), DP: 90-190 kHz (H)/48 - 120 Hz (V)
sRGB
SoftBlue
Flicker-free
Pixel Density: 110 PPI
Display Screen Coating: Anti-Glare, 3H, Haze
25%
EasyRead
Adaptive sync (VRR)
HDR: HDR10 supported
EyeSafe
DICOM (D-mode)

Connectivity

Signal Input: HDMI 2.1 TMDS x 2, DisplayPort
1.4 x 1
Sync Input: Separate Sync, Sync on Green
Audio (In/Out): Audio out x 1
HDCP: HDCP 1.4/ 2.3 (HDMI/DisplayPort)
USB Hub: USB3.2, Gen1, 5G, upstream: USB-B;
downstream: USB-A x 3 (with x 1 fast charge B.C
1.2), USB-C x 1 (Data 15 W)

Convenience

Built-in Speakers: 5 W x 2
Plug and Play Compatibility: DDC/CI, Mac OS,
sRGB, Windows 11/10
User convenience: SmartImage, Input,
Brightness, Menu, Power On/Off

OSD Languages: Brazil Portuguese, Czech, Dutch,
English, French, Finnish, German, Greek,
Hungarian, Italian, Japanese, Korean,
Portuguese, Polish, Russian, Simplified Chinese,
Spanish, Swedish, Traditional Chinese, Turkish,
Ukrainian
Other convenience: Kensington lock, Earphone
hook, VESA mount (100 x 100 mm)
Control software: SmartControl
MultiView: PIP/PBP mode, 2 x devices

Stand

Height adjustment: 180 mm
Swivel: +/- 180 degree
Tilt: -5/30 degree

Power

ECO mode: 21.7 W (typ.)
Power supply: Built-in, 100–240 VAC, 50–60 Hz
Off mode: 0.3 W (typ.)
On mode: 28.7 W (typ.) (Energy Star test
method)
Standby mode: 0.3 W (typ.)
Power LED indicator: Operation - White, Standby
mode - White (flashing)
Energy Label Class: E

Dimensions

Packaging in mm (W x H x D):
930 x 525 x 188 mm
Product without stand (mm):
807 x 369 x 111 mm
Product with stand (max height):
807 x 604 x 287 mm

Weight

Product with packaging (kg): 14.10 kg
Product with stand (kg): 10.01 kg
Product without stand (kg): 7.41 kg

Operating conditions

Altitude: Operation: +12,000 ft (3658 m), Non-
operation: +40,000 ft (12,192 m)
Temperature range (operation): 0°C to 40 °C
Relative humidity: 20%-80 %
Temperature range (storage): -20°C to 60 °C
MTBF (demonstrated): 70,000 hrs (excluded
backlight)

Sustainability

Environmental and energy: EPEAT*, RoHS,
Energy Star
Post-consumer recycled plastic: 85%
Recyclable packaging material: 100 %
Specific Substances: Mercury free, PVC/BFR free
housing

Compliance and standards

Regulatory Approvals: CB, CE Mark, South Africa
Energy, TUV/GS, TUV Ergo, TCO Certified, TCO
Certified Edge, EAC, EAC ROHS, MEPS, CEL, CCC,
CECP, UKCA, EMF, FCC, ICES-003, eyesafe®
CERTIFIED 2.0, TÜV Rheinland Low Blue Light
(Hardware Solution)
Warranty: 5 years

Cabinet

Finish: Texture
Foot: Black
Front bezel: Black
Rear cover: Black

What's in the box?

Cables: HDMI cable, DisplayPort cable, Power
cable
Monitor with stand
User Documentation



* Radius of the arc of the display curvature in mm
* Response time value equal to SmartResponse
* NTSC Area based on CIE1976, sRGB Area based on CEI1931.
* Activities such as screen sharing and online streaming over
the Internet can impact your network performance. Your
hardware and network bandwidth will determine the
overall audio and video quality.
* If your Ethernet connection seems slow, please enter the
OSD menu and select USB 3.0 or a higher version that can
support the LAN speed up to 1G.
* EPEAT rating is valid only where Philips registers the
product. Please visit <https://www.epeat.net/> for
registration status in your country.
* The 5 year warranty is a voluntary manufacturer's limited
warranty. It applies only in the countries listed on this page
[https://www.philips.co.uk/c-e/so/monitors/tco-certified-
edge](https://www.philips.co.uk/c-e/so/monitors/tco-certified-edge). For consumers, it is provided in addition to, and
without affecting, their legal rights under applicable
national laws. For non-consumer (business/professional)
end users, only the manufacturer's limited warranty terms
apply.
* The monitor may look different from feature images.
* The products and accessories listed on this leaflet may differ
by country and region.